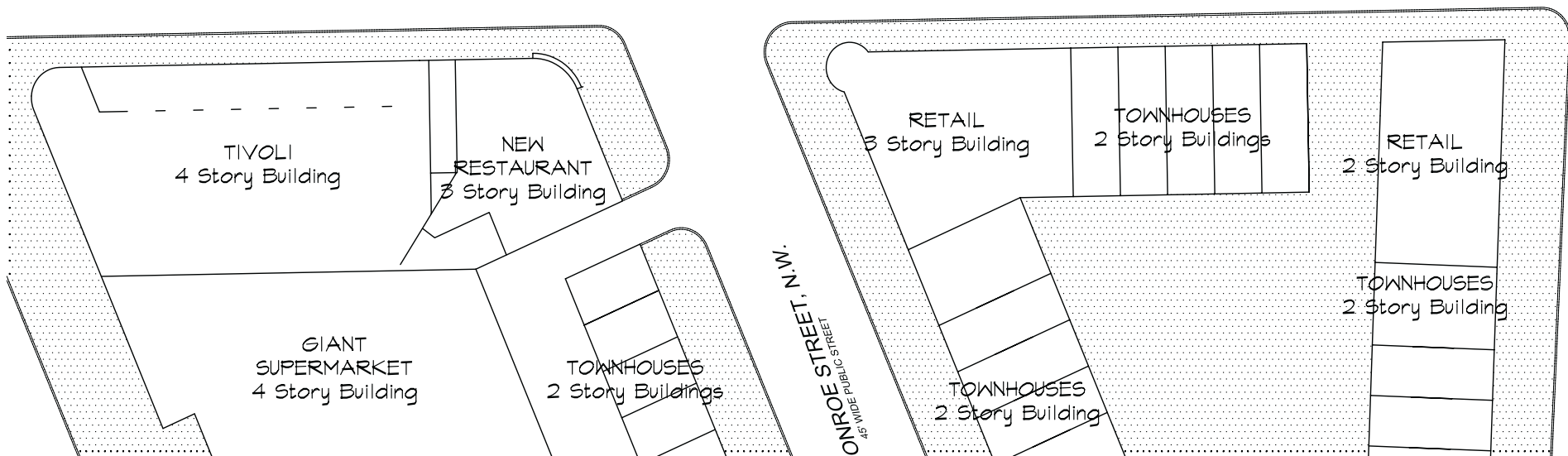
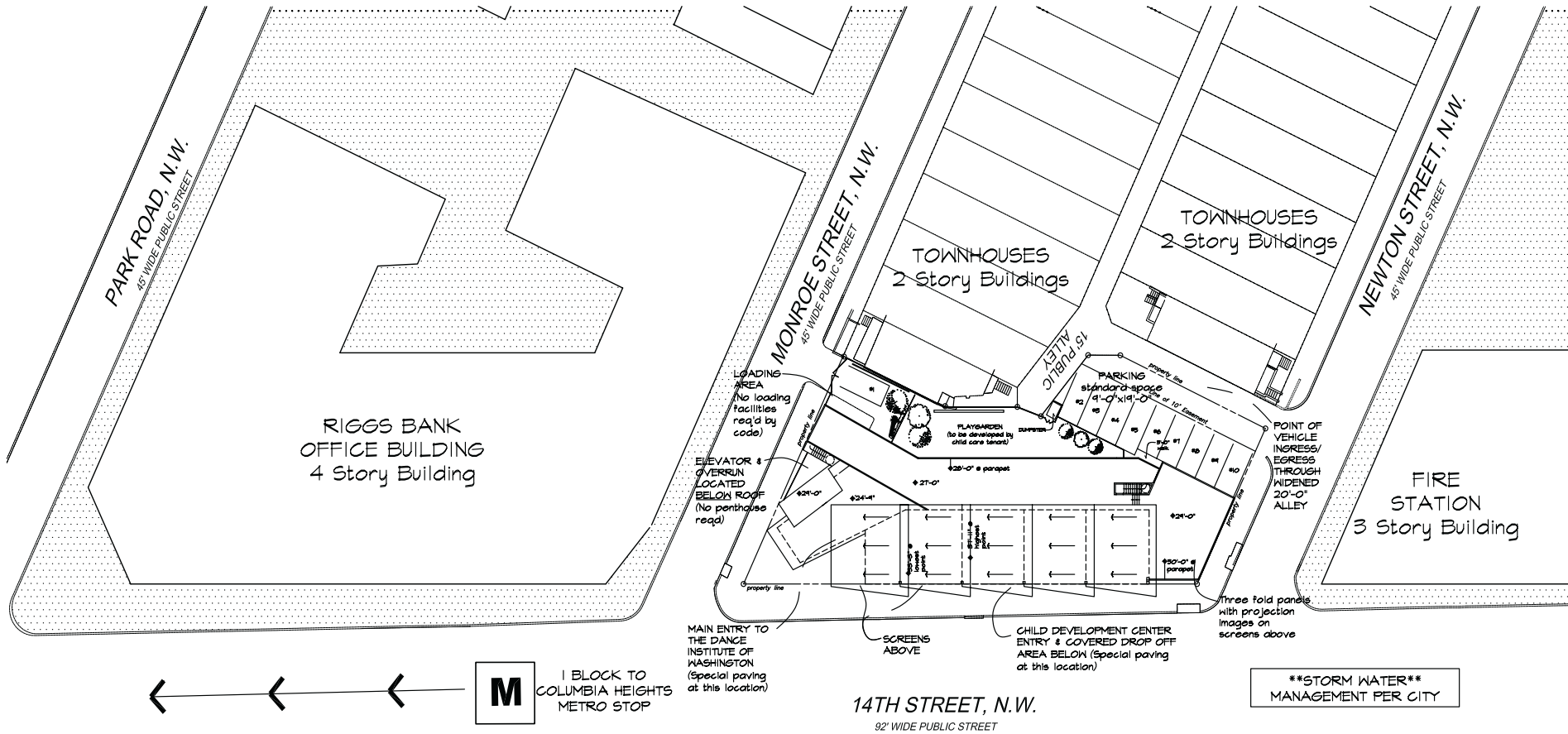
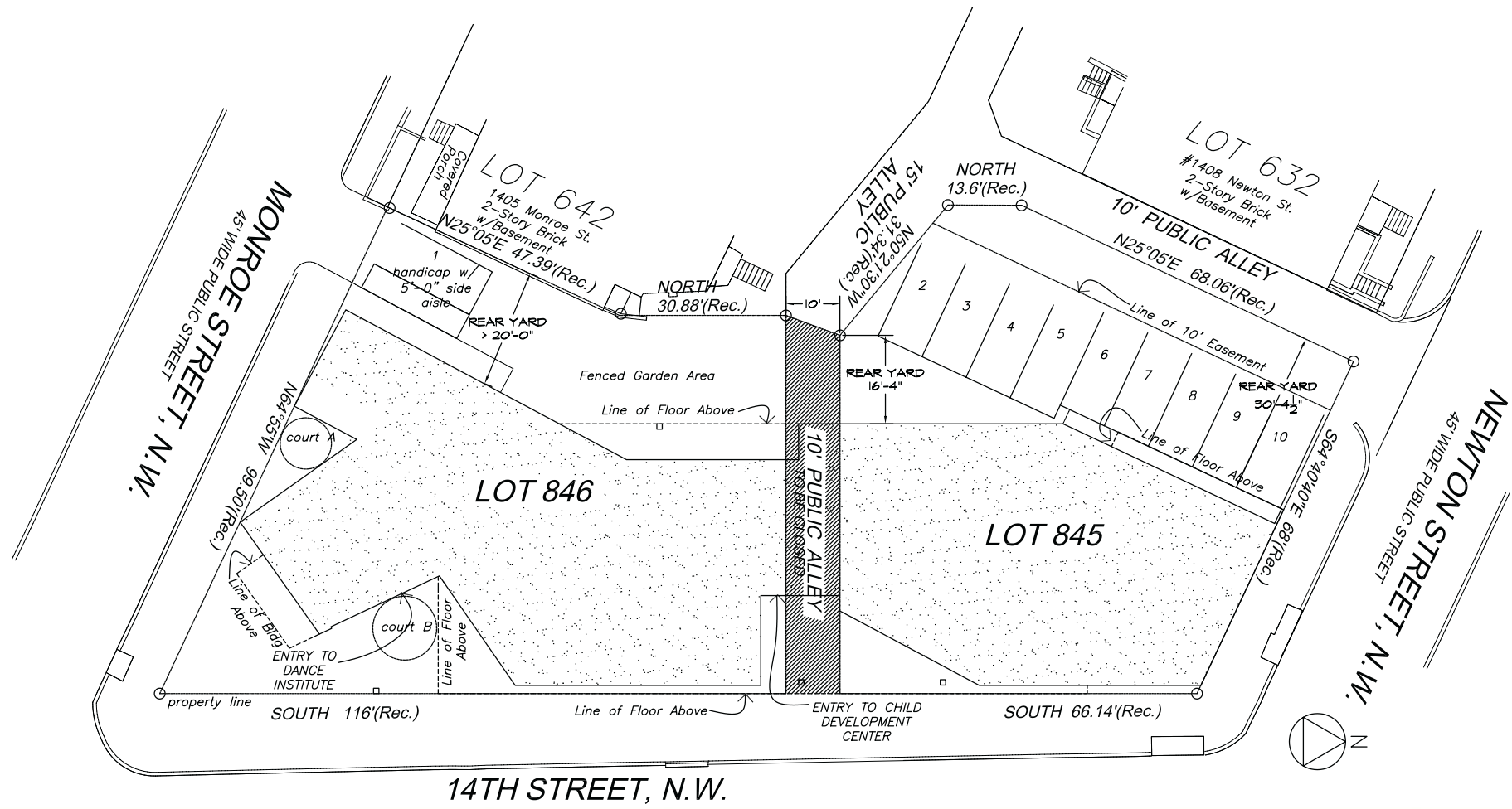


the dance insitute of washington

1	overview (site)
2	zoning + rendering
3	first + model
4	second + model
5	elevations (front + rear)
6	interior
7	typ wall section
8	interior
9	interior
10	rendering

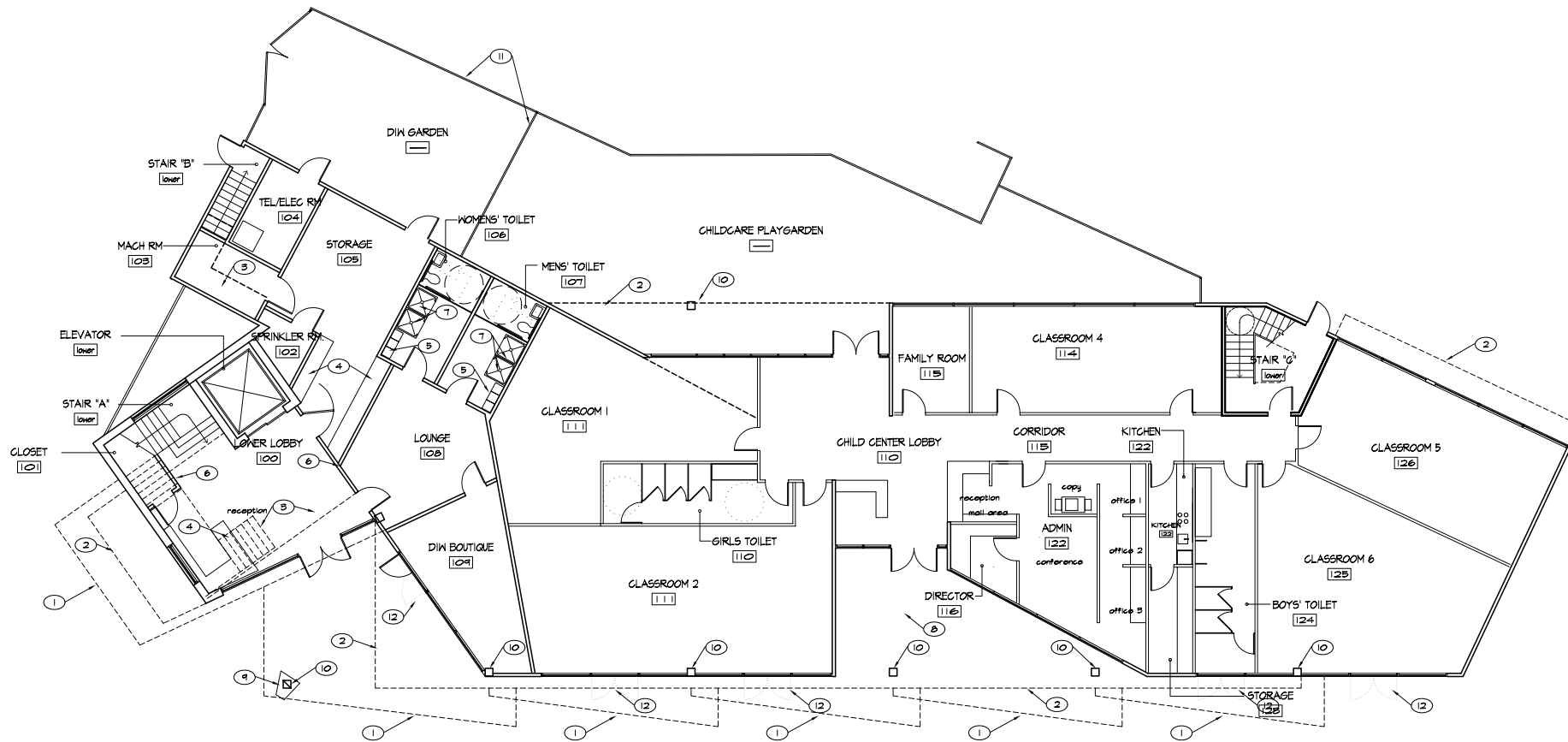




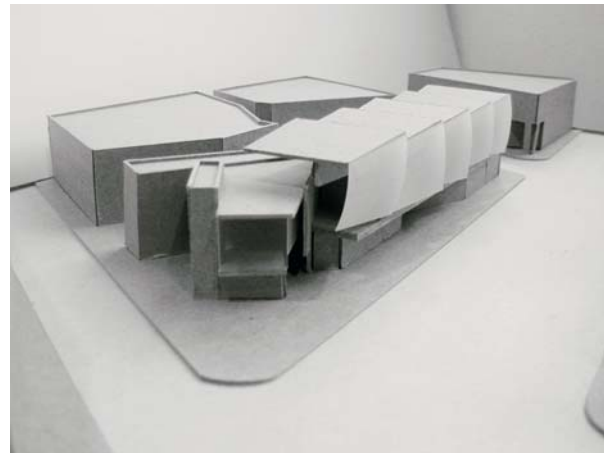


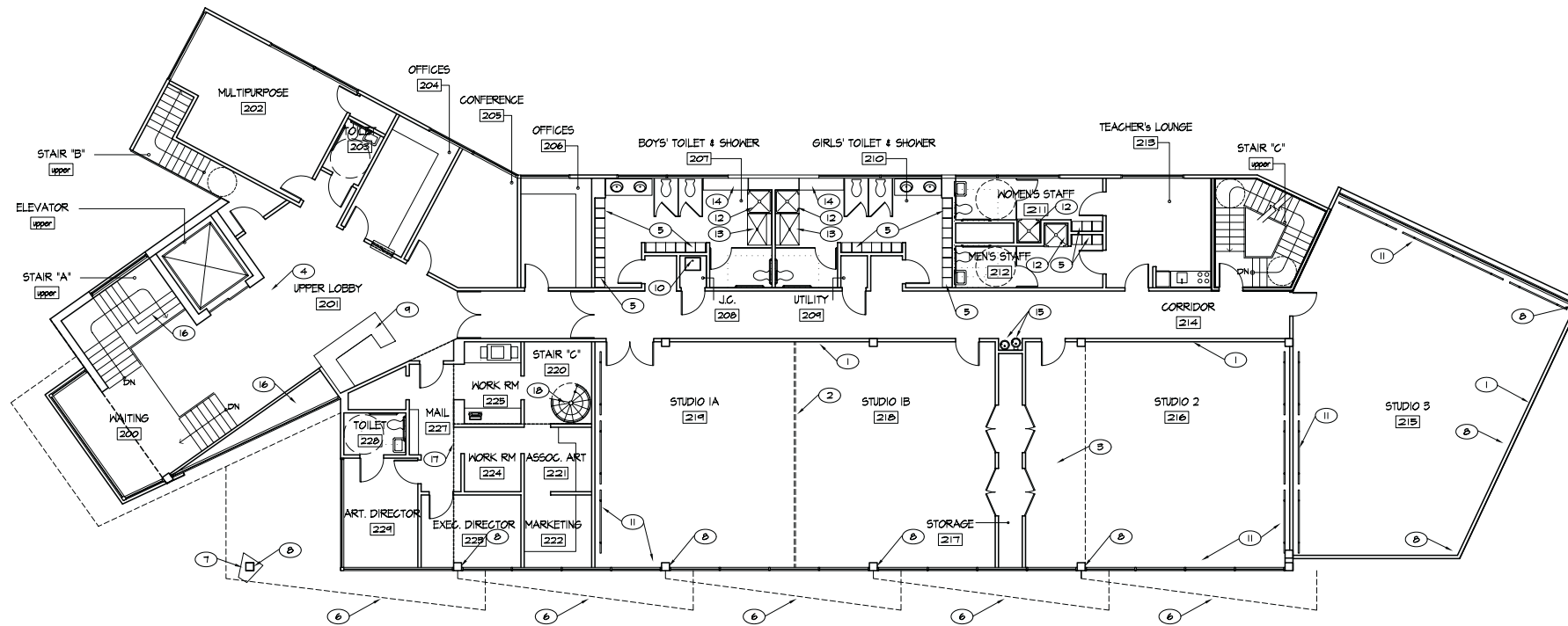
14TH STREET, N.W.





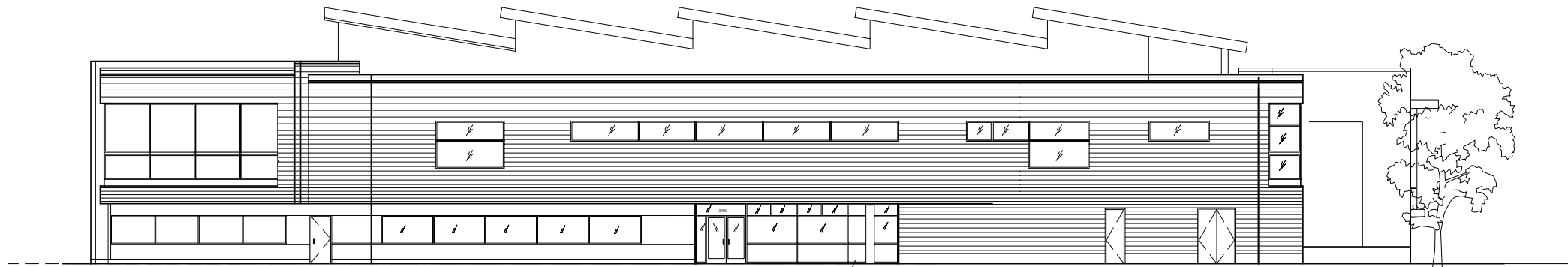
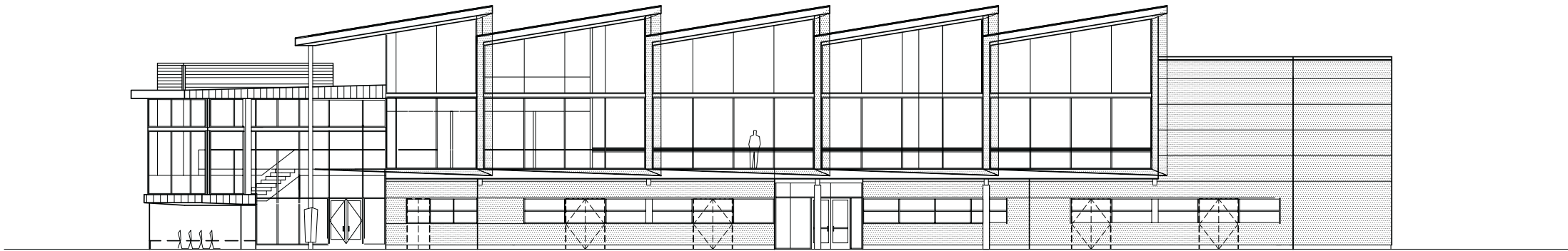
- FLOOR PLAN SHEET NOTES**
- ① Edge of roof overhang above
 - ② Edge of building overhang above
 - ③ Edge of opening/stair above
 - ④ Built-in shelving, refer to Interior Elevations
 - ⑤ Double-tier lockers
 - ⑥ Display cases, refer to Interior Elevations
 - ⑦ 3'-0"X3'-0" Shower Stall
 - ⑧ Covered drop-off area
 - ⑨ Kiosk, refer to Details
 - ⑩ Steel Column, refer to Structural Drawings for information
 - ⑪ Fence surrounding garden areas, refer to Details
 - ⑫ Provide adequate storefront spacing to allow for future installation of 6'-0" wide storefront doors

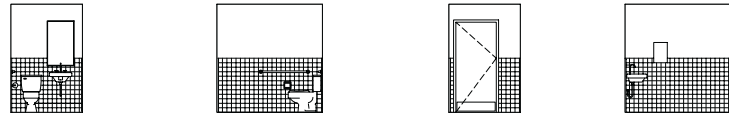




- FLOOR PLAN SHEET NOTES**
- ① Mirrors to be located on wall, refer to Interior Elevations
 - ② Movable partition to be mounted above
 - ③ Full down stair to storage area above
 - ④ Rated overhead door on fusible link
 - ⑤ Double-tier lockers
 - ⑥ Edge of roof overhang above
 - ⑦ Kiosk below
 - ⑧ Steel column, refer to Structural Drawings for information
 - ⑨ Reception desk millwork, refer to Interior Elevations
 - ⑩ Map sink
 - ⑪ Dance barre, refer to Interior Elevations
 - ⑫ 5'-0"X5'-0" Shower stall
 - ⑬ 5'-0"X4'-0" Handicap shower stall with bench
 - ⑭ Built-in bench, refer to Interior Elevations
 - ⑮ Water cooler
 - ⑯ Open to floor below
 - ⑰ Line of mezzanine above
 - ⑱ Metal spiral stair up to mezzanine level

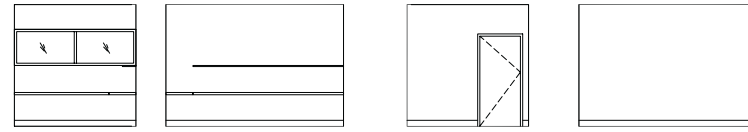






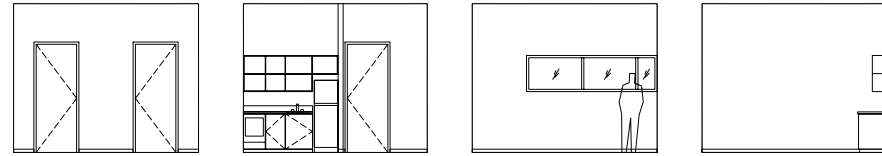
A B C D

1 Toilet 203 Elevations
1/4" = 1'-0"



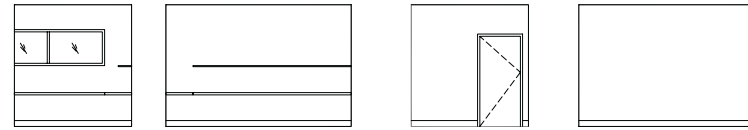
A B C D

2 Offices Elevations 204
1/4" = 1'-0"



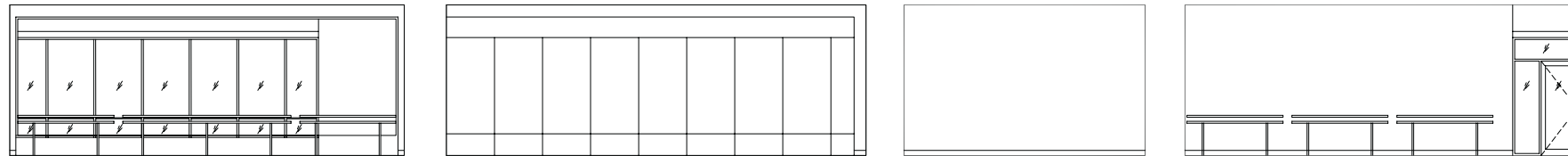
A B C D

3 Teacher's Lounge Elevations
1/8" = 1'-0"



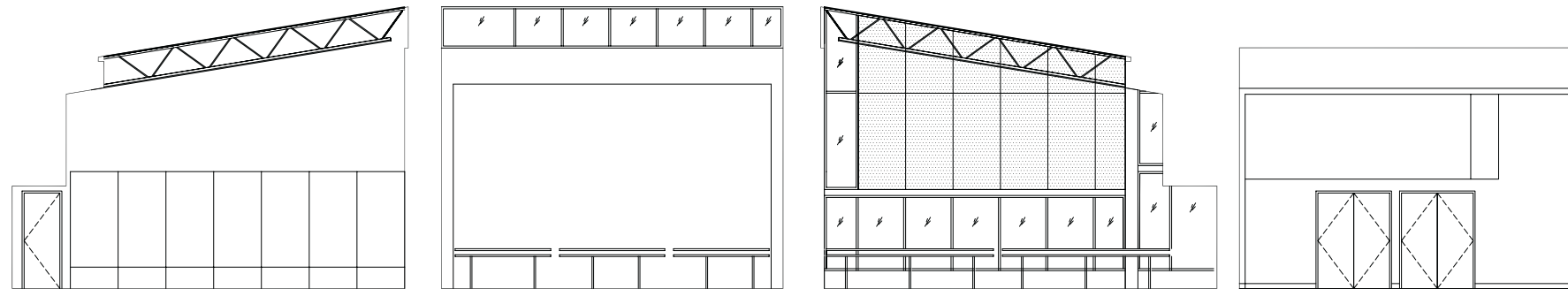
A B C D

4 Offices Elevations 206
1/4" = 1'-0"



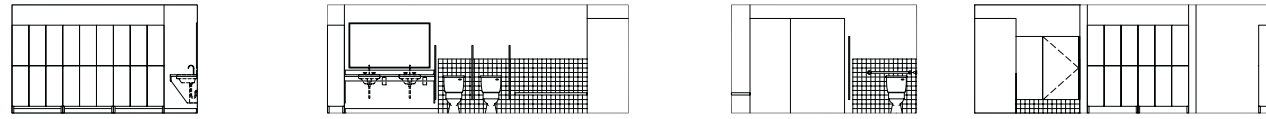
A B C D

5 Studio 3 Elevations
1/4" = 1'-0"



A B C D

6 Studio 2 Elevations
1/4" = 1'-0"



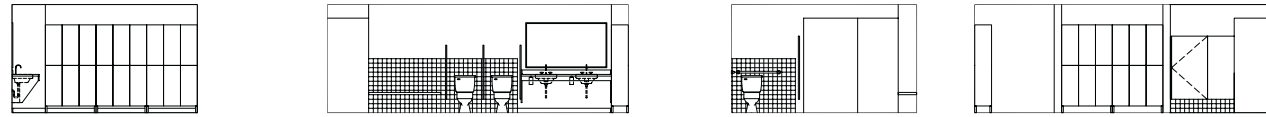
A

B

C

D

1 Boys' Toilet/Shower Elevations
1/4" = 1'-0"



A

B

C

D

2 Girls' Toilet/Shower Elevations
1/4" = 1'-0"



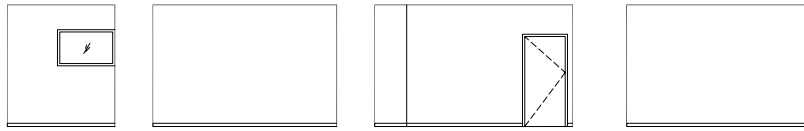
A

B

C

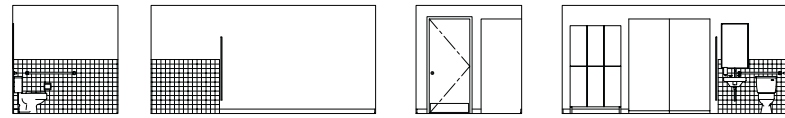
D

3 Main Entry Lobby Elevations
1/4" = 1'-0"



A B C D

1 Conference Room Elevations
1/4" = 1'-0"



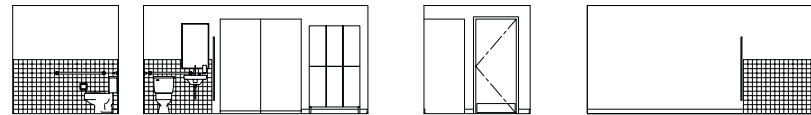
A B C D

2 Women's Toilet 107 Elevations
1/4" = 1'-0"



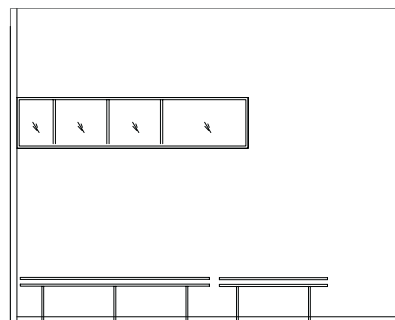
A B C D

3 Director's Toilet Elevations
1/4" = 1'-0"

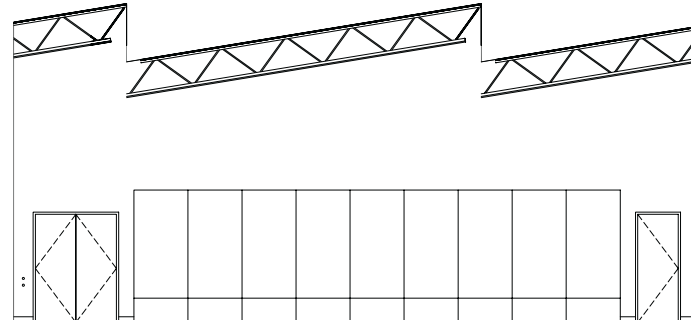


A B C D

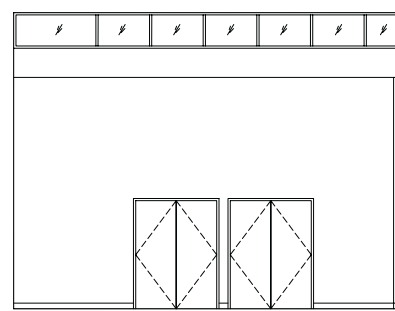
4 Men's Toilet Room 108 Elevations
1/4" = 1'-0"



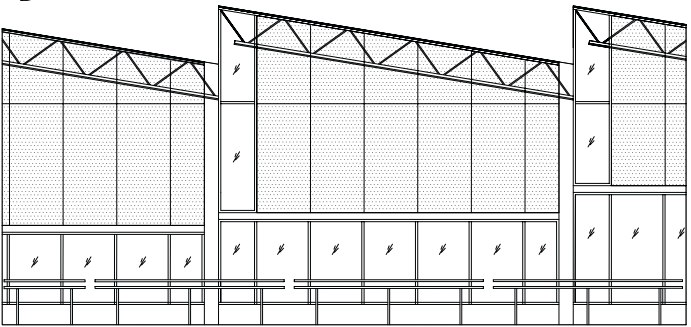
A



B



C



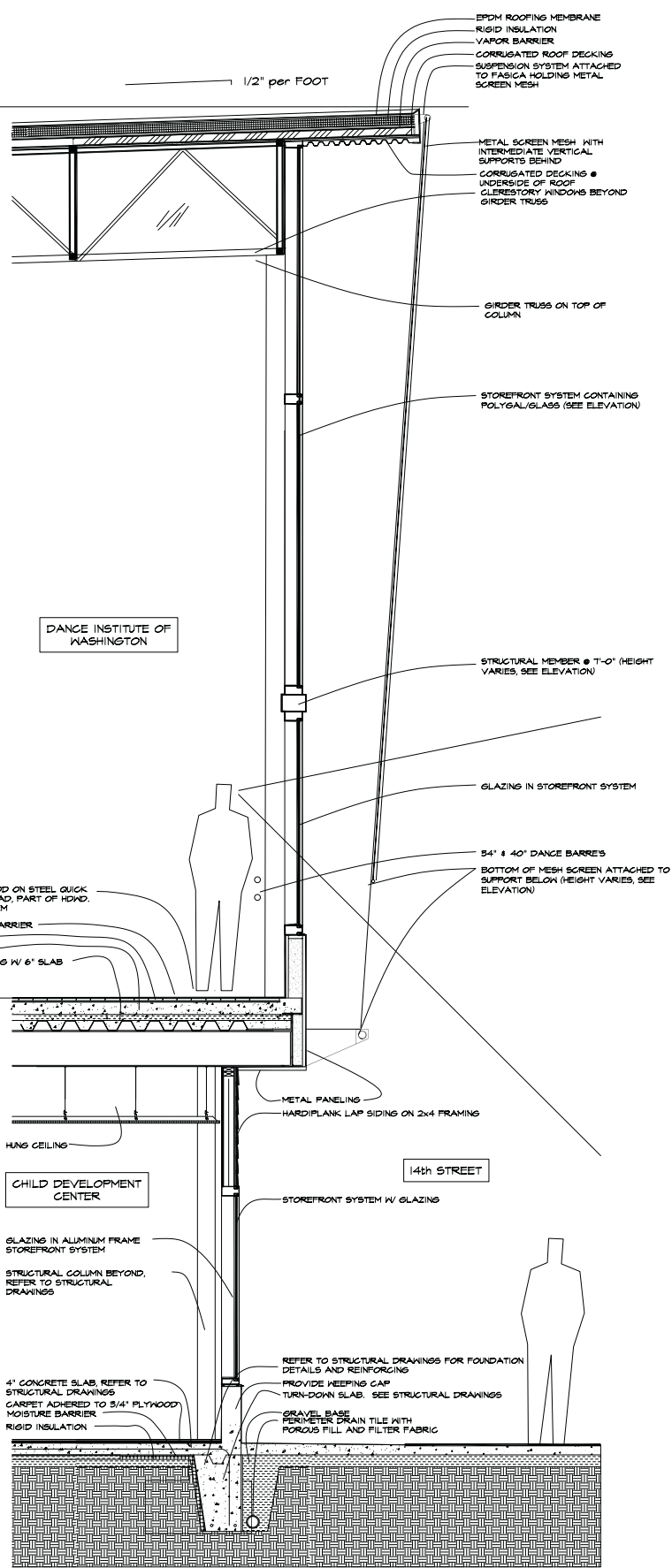
D

5 Main Studio Elevations
1/4" = 1'-0"

38'-0" @
TOP OF
ROOF
highest
point

37'-8 1/2" @ TOP
OF ROOF girder
truss

1/2" per FOOT



EPDM ROOFING MEMBRANE
RIGID INSULATION
VAPOR BARRIER
CORRUGATED ROOF DECKING
SUSPENSION SYSTEM ATTACHED
TO FASCIA HOLDING METAL
SCREEN MESH

METAL SCREEN MESH WITH
INTERMEDIATE VERTICAL
SUPPORTS BEHIND
CORRUGATED DECKING @
UNDERSIDE OF ROOF
CLERESTORY WINDOWS BEYOND
GIRDER TRUSS

GIRDER TRUSS ON TOP OF
COLUMN

STOREFRONT SYSTEM CONTAINING
POLY GAL/GLASS (SEE ELEVATION)

STRUCTURAL MEMBER @ 1'-0" (HEIGHT
VARIES, SEE ELEVATION)

GLAZING IN STOREFRONT SYSTEM

34" x 40" DANCE BARRIES
BOTTOM OF MESH SCREEN ATTACHED TO
SUPPORT BELOW (HEIGHT VARIES, SEE
ELEVATION)

7/8" SOLID HARDWOOD ON STEEL QUICK
CLIPS & 1/2" FOAM PAD, PART OF HDND,
DANCE FLOOR SYSTEM
1/32" POLY VAPOR BARRIER
4" CONCRETE SLAB
RIGID INSULATION
CORRUGATED DECKING W/ 6" SLAB

UPPER LEVEL

METAL PANELING
HARDPLANK LAP SIDING ON 2x4 FRAMING

HUNG CEILING
CHILD DEVELOPMENT
CENTER

14th STREET

STOREFRONT SYSTEM W/ GLAZING

GLAZING IN ALUMINUM FRAME
STOREFRONT SYSTEM
STRUCTURAL COLUMN BEYOND,
REFER TO STRUCTURAL
DRAWINGS

4" CONCRETE SLAB, REFER TO
STRUCTURAL DRAWINGS
CARPET ADHERED TO 3/4" PLYWOOD
MOISTURE BARRIER
RIGID INSULATION

LOWER LEVEL

REFER TO STRUCTURAL DRAWINGS FOR FOUNDATION
DETAILS AND REINFORCING
PROVIDE KEEPING GAP
TURN-DOWN SLAB. SEE STRUCTURAL DRAWINGS
GRAVEL BASE
PERIMETER DRAIN TILE WITH
POROUS FILL AND FILTER FABRIC